



Lake Marion Greenway and North Creek Greenway Natural Resource Management Plans

Christian Klatt, Natural Resource Specialist
Parks Department
Physical Development Division

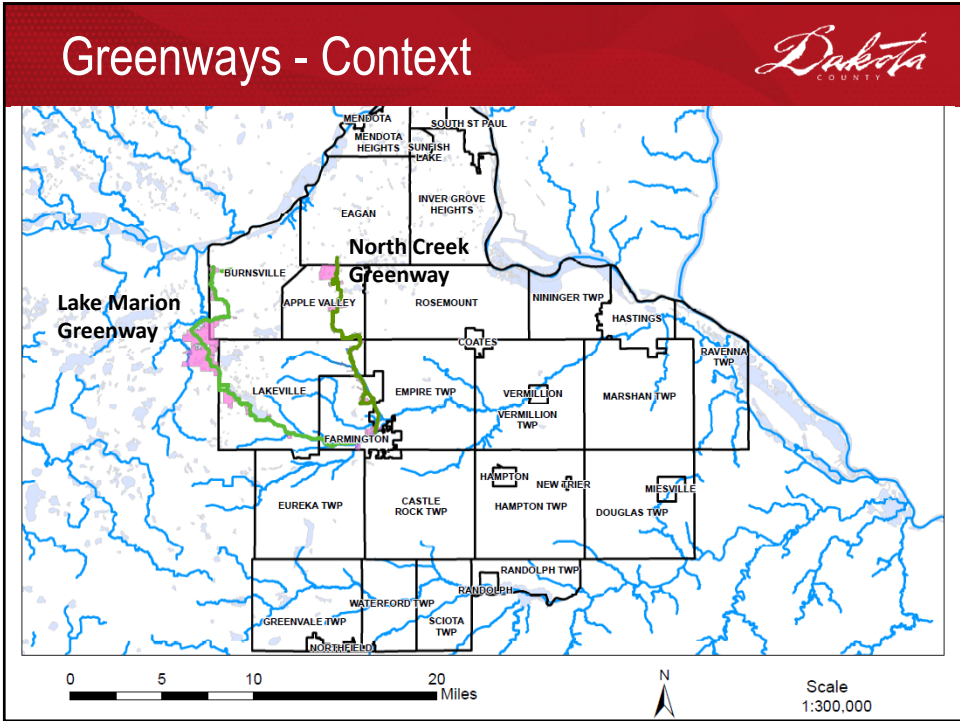
1

Overview



- Greenways Context
- Findings & Recommendations
- Project Timeline
- Requested Actions
- Questions/Comments

2



3

Findings and Recommendations

- North Creek Greenway
 - 14 miles of trail
 - 1,464 acres of public lands considered
 - Total of \$1.5 million in natural resource projects identified

- Lake Marion Greenway
 - 20 miles of trail
 - 3,517 acres of public lands considered
 - Total of \$1.5 million in natural resource projects identified

4

Oak Savanna *Dakota* COUNTY




- Eliminate exotic shrubs
- Remove secondary trees and shrubs
- Establish native grasses
- Fire

5



Oak Woodlands *Dakota* COUNTY

- Remove exotic shrubs
- Thin forest
- Establish native shrubs
- Enhance shade-tolerant forbs



6

Upland Grasslands



- Convert turf areas and non-native grasslands to prairies

7

Upland Grasslands - Prairie



- Remove encroaching woody species
- Ongoing prairie management



8


Wetlands




The slide features a red header with the title 'Wetlands' and the Dakota County logo. Below the header, there are two photographs. The left photograph shows a narrow stream or ditch with a thick layer of bright green algae or duckweed covering the water and surrounding banks. The right photograph is a close-up of a person's hand holding a green plant stem with small, feathery seed heads, likely a species of grass or sedge.

9

Shoreline

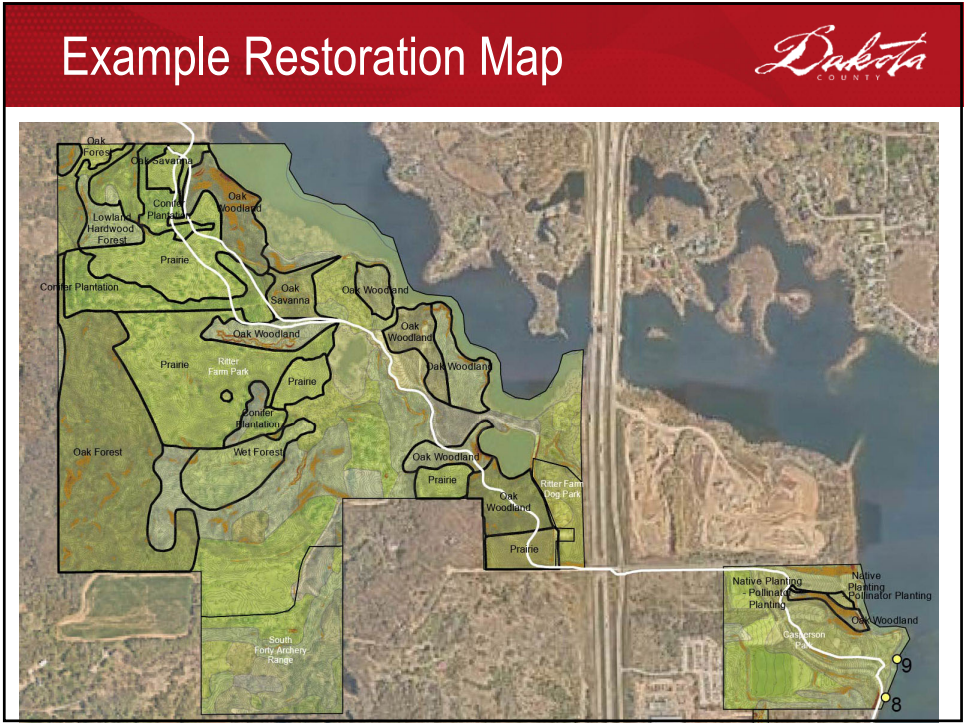


- Manage invasive species
- Re-introduce native emergent forbs



The slide features a red header with the title 'Shoreline' and the Dakota County logo. Below the header, there is a bulleted list on the left and a photograph on the right. The list contains two items: 'Manage invasive species' and 'Re-introduce native emergent forbs'. The photograph shows a grassy shoreline with several yellow wildflowers in the foreground. In the background, there are several houses and trees along a body of water.

10



11

Example Restoration Sequence

Table 10: Restoration Sequence Work Plan for Natural Resource Projects

PLANT COMMUNITY	PRIORITY	SITE RESTORATION SEQUENCE [Site #].[Year]	SEASON	ACTIVITY	SLOPE <30% ACRES	SLOPE >30% ACRES	COST/AC SLOPE <30%	COST/AC SLOPE >30%	COST PER TASK
Owner: Lakeville									
Site: Ritter Farm Park									
1. Oak Woodland and Oak Savanna	1	1.1	fall, winter	Treat invasive shrubs, thin ash, cottonwood, and walnut trees	46.6	3.5	\$3,500	\$5,000	\$180,600
		1.2 to 1.5	summer, fall	Follow up foliar herbicide on invasive shrub resprouts	46.6	3.5	\$900	\$1,300	\$46,490
		1.2	spring	Hand seed/broadcast seed native ground layer mix with emphasis on grasses	46.6	3.5	\$1,600	\$1,800	\$80,860
		1.3 or 1.4	spring, fall	Prescribe burn, timing dependent on development of fine fuels	46.6	3.5	\$8000/unit		\$80,000
									Subtotal \$387,950

12

Anticipated Changes to Drafts



The following items will be resolved in the **Lake Marion** Greenway NRMP prior to County Board review:

- Table of Contents Updated
- Executive Summary update
- Table 9 – Previous Projects completion
- Water Resource Recommendations in Figures 14A-D
- Table 12 consistency with Executive Summary

13

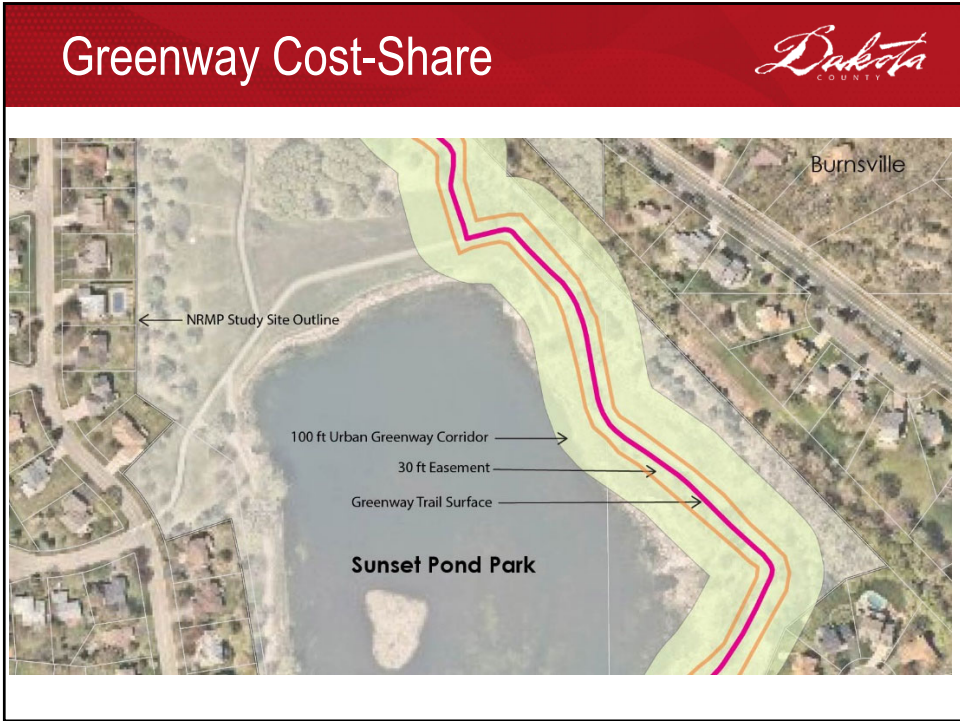
Anticipated Changes to Drafts



The following items will be resolved in the **North Creek** Greenway NRMP prior to County Board review:

- Table of Contents Updated
- Executive Summary update to reflect restoration costs
- Table 10 – Previous Projects completion
- Figure 14A adjustment


14



15

Greenway Cost-Share		Dakota COUNTY	
Greenway Roles and Responsibilities	30 foot Trail Easement	100 – 300 foot Greenway Corridor	Natural Lands Beyond Corridor
Grant Match Cost Share	County	County and Landowner have equal cost share (50/50).	County/Landowner cost share to be determined by Land Conservation Plan.
Restoration Project Management	County	County/Landowner Partnership.	Landowner. County may assist as determined by Land Conservation Plan.
Maintenance	County	County. Landowner may assist.	County/Landowner cost share to be determined by Land Conservation Plan.


16

Project Timeline and Engagement 

Project Timeline:

Physical Development Committee	March 15, 2022
Public Open House	March 22, 2022
Burnhaven Library, 5-7pm, Remote Digital Option	
Planning Commission	April 28, 2022
Anticipated Plan Adoption	May 17, 2022

17

Requested Actions 

County Staff asks for your recommendation to release of amended Lake Marion and North Creek Greenway NRMP Drafts for public review.

18



Questions?